



DUSTLESS BLASTING® DB800S & DB800S PRO MOBILE BLAST SYSTEMS



PART NUMBERS AND SCHEMATICS GUIDE

Company Profile

Allredi was formed in the early 2020, when two of the largest distributors in the blasting, coating, safety, and environmental industry, APE Companies and Marco Group International, joined forces. While the qualities both companies are known for have not changed, a lot about our business is new. New abilities. New agilities. New ways to help you win. This calls for a new name, Allredi.

This name exemplifies what we have become. It is completely oriented to the needs of our customers. To your needs. It says that when you call us for anything – products, service, expert advice, anything – you can consider it done. Or even better, Allredi done.

We are your right-now supplier. From skills to SKUs, we deliver the goods fast. So you can be more agile every minute, every day. This is who we are. This is what our new name means. Go ahead and expect excellence, because we're bringing it.

Our Mission and Vision

To be the industry's preferred partner in surface preparation solutions through unrivaled technical expertise, customer experience, product availability, and tailored service offerings.

The Allredi Difference

- **Industry Experience** – With Allredi on your team, you have access to expertise which can only come from decades of industry leadership. We have organized our engineering department, production specialists, customer operations, and safety support into a "Center of Competence." As an Allredi customer, you have access to hundreds of years of cumulative experience related to your operations.
- **Manufacturing Excellence** – Allredi is a U.S. based manufacturer of equipment for the Surface Preparation and Protective Coatings industries. Allredi's engineers benchmark the industry to ensure that we design and manufacture superior products that set the "Gold Standard" for performance, safety, and quality.
- **Legendary Customer Service** – Allredi's legendary customer service team is staffed by friendly, highly-trained individuals who are focused on providing the highest level of product support, order accuracy, and customer satisfaction.
- **Product Availability** – We stock over 10,000 SKU's and have over 45 shipping locations to serve North American and International markets for all major brands of blasting, coating, environmental, and safety equipment. Allredi is your right-now supplier, so you can keep your projects moving. From our foundation of strong relationships, we have built a nationwide network that puts vast inventory and ready service close to our customers. We provide advanced expertise, and we deliver the goods fast – so you can easily access the products and services you need to me more agile every minute, every day.
- **Technology Leadership** – Our website provides: Operator's Manuals, Part Numbers and Schematics Guides, SDS information, and key product features and specifications, providing access to information 24/7.

TABLE OF CONTENTS

Company Profile	1
Table of Contents	2
Dustless Blasting® DB800 Mobile S® ..	3-16
Part Numbers	3
Part Numbers & Schematics	5
DB800 Blast Pot	5-6
Air Inlet Pipe String	7
Electric Control Box	8
DB800 Mobile S Blaster	9-10
DB800 Mobile S Pro Blaster	11-12
Optional Accessories	13
Air Compressor Maintenance - 185 CFM ..	13
Air Compressor Maintenance - 300 CFM ..	13
Blast Nozzles	14
Electric Control Line & Plugs	15
Blast Hose & Couplings	16
Maintenance Notes	17-18

PART NUMBERS

Part Numbers	DUSTLESS BLASTING® DB800® MOBILE S BLASTERS				
	Blast Pot	Compressor	Water Tank	Water Pump	Abrasive Nozzle
10111182	8 Cu. Ft.	185 CFM	100 Gal	48 GPM	#5
10111183	8 Cu. Ft.	300 CFM	100 Gal	48 GPM	#6

	DB800 Mobile S	DB800 Mobile S Pro
Blast Pot Specifications:	ASME / PED / CE Compliant 63" H x 34" W x 40" D	ASME / PED / CE Compliant 63" H x 34" W x 40" D
Air Cooler:	ADCS-350	ADCS-350
Operating Pressure:	30 - 150 PSI	30 - 150 PSI
Air Compressor:	49 hP Tier 4 Engine 23 gal Diesel Tank	74 hP Tier 4 Engine 29 gal Diesel Tank
Trailer Specifications:	DOT Compliant LED Lights Two 6,000 lb Torsion Axle 8 Ply Tires + Full Spare	DOT Compliant LED Lights Two 6,000 lb Torsion Axle 8 Ply Tires + Full Spare
Trailer Dimensions:	Weight: 5,900 lb Length: 18'6" Width: 6'6"	Weight: 7,244 lb Length: 18'6" Width: 6'6"

PART NUMBERS & SCHEMATICS



DB800 S



DB800 S Pro

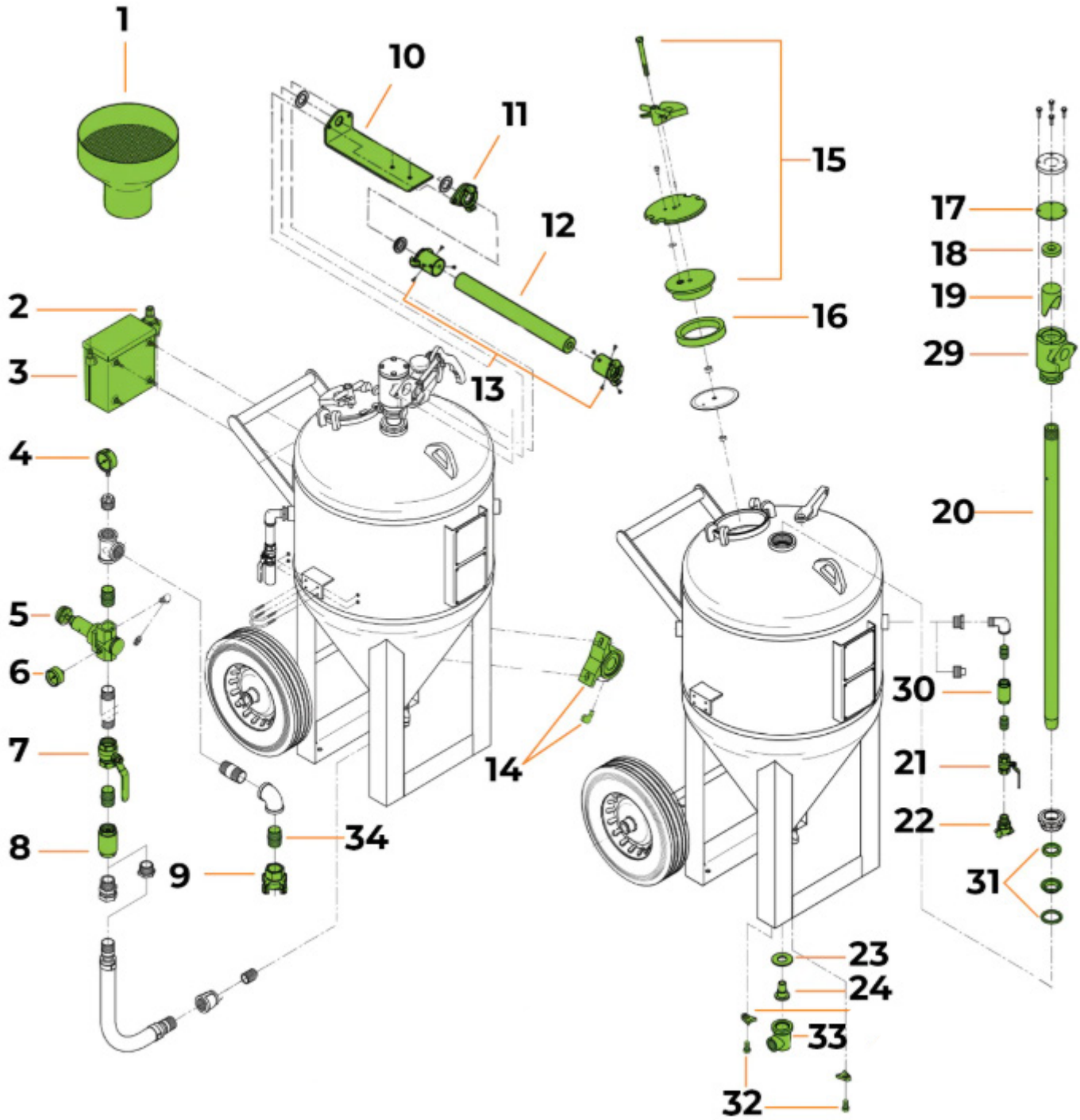
PART NUMBERS & SCHEMATICS GUIDE

Figure 1: DB800 Blast Pot

Item #	Part #	Description
Fig. 1		
1	10DBAMF0460	DB500 & DB800 Funnel
2	10DBAPG0104	1/4" Air Filter/Regulator for Control Box
3	10DBAMF0297	Electric Control Box Assembly
4	10DBAPG0096	300 PSI Pressure Gauge
5	10DBAPG0067	1-1/4" Threaded Norgren Air Regulator
6	10DBAPG0148	200 PSI Back Pressure Gauge
7	10DBAPG0152	1-1/4" Full Port Nickel Plated Ball Valve
8	10DBAPG0081	1-1/4" Check Valve
9	10ME3	1-1/4" 4-Lug Air Hose Coupling
10	10DBFMF0151	Pinch Valve Plate
11	10DBAMF0461	2-Lug KF Hose Coupling, Pinch Hose Elbow Adapter
12	10BH1002BR	1" ID Blast Hose, Per Foot
13	10QBR2	1" Two Lug Coupling, Brass
—	10SBG	Two-Lug KF Hose Coupling Gasket
14	10DBAMF0700	Pneumatic Turbine Vibrator
15	10DBAMP0475	Fill Cap Assembly
16	10DBAPG0167	DB500 and DB800 Fill Cap Gasket
17	10DBAPG0009	Outlet Elbow Cap Gasket
18	10DBAPG0005	Outlet Elbow Insert Gasket
19	10DBAPG0163	Outlet Elbow Insert
20	10DBPMF0064	Outlet Pipe
21	10DBAPG0150	3/4" Full Port Nickel Plated Ball Valve
22	10ME1	3/4" Male NPT 2-Lug Coupling
23	10DBAPG0010	Air Inlet Jet Gasket
24	10DBPMF0142	Air Inlet Jet, 5/8" Diameter
29	10DBPMF0245	Outlet Elbow Complete Assembly
30	10DBAPG0082	3/4" Check Valve
31	10DBSPG0027	Outlet Pipe Fitting Maintenance Kit
32	10DBAHW0061	Air Inlet Body Lug Bolts
33	10DBFMF1135	1-1/4" Air Inlet Adapter, Stainless Steel
—	10DBAMF0091	1-1/4" 90 Degree Elbow for Air Inlet, Threaded
—	10DBAPG0010	Air Inlet Jet Gasket
—	10DBAPG0011	Air Inlet Body Lugs
—	1015100	Marco 151E Remote Control Switch
—	1015545	50' 16/2 Power Cord with 3-Prong Male and Female Twist Lock Plugs
—	10111095	2' 16/2 Power Cord with 3-Prong Female Twist Lock and Male Weather Pack Plug (Connects 1015545 Power Cord to Control Box)
—	1015555	3-Prong Male Twist Lock Plug

PART NUMBERS & SCHEMATICS GUIDE

Figure 1: DB800 Blast Pot



PART NUMBERS & SCHEMATICS GUIDE

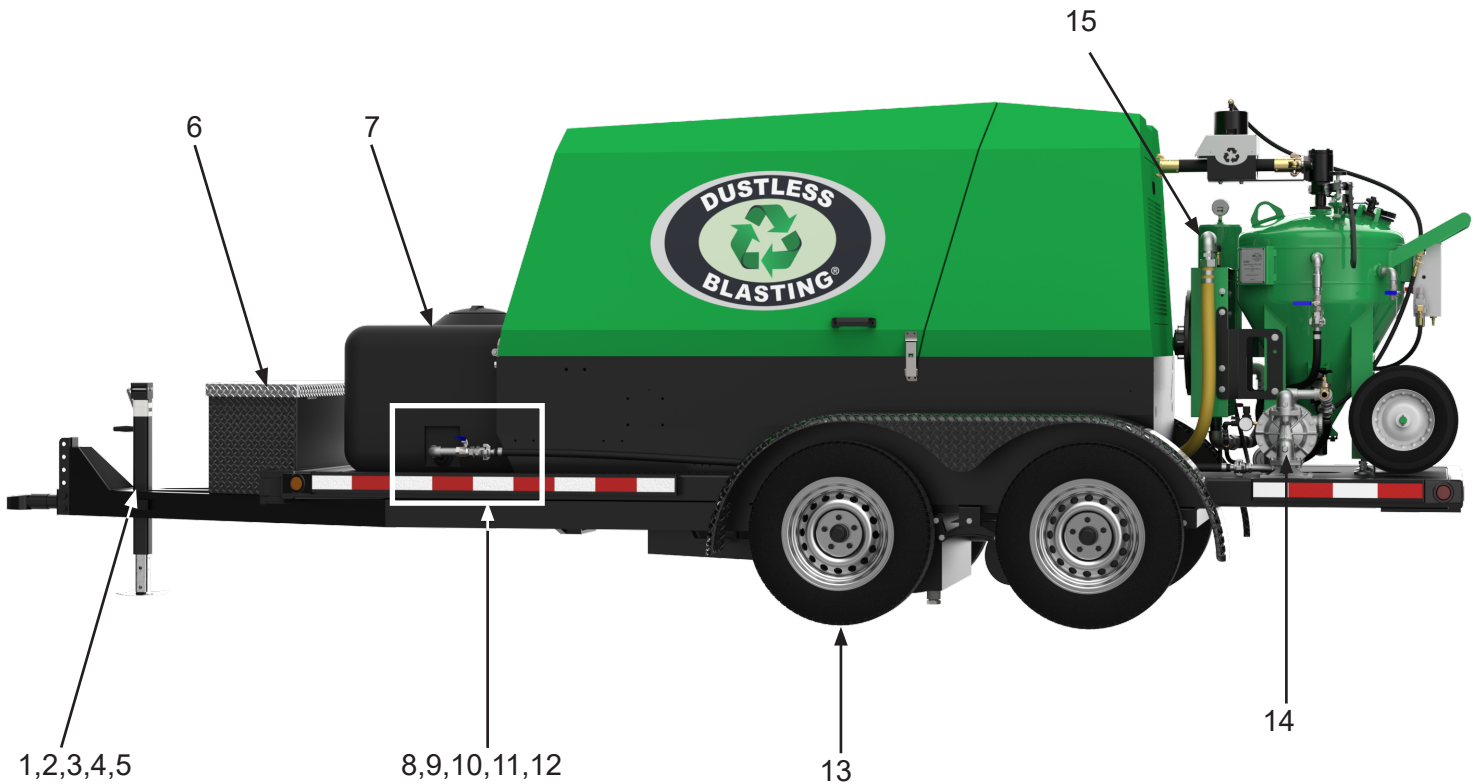
Figure 2: Dustless Blasting DB800 Mobile S Blaster



Item #	Part #	Description
Fig. 2		
—	10DB800S	Dustless Blasting DB800 Mobile S Blaster
1	10DBAMF0404	Trailer Jack Assembly
2	10100675	1/2" Lock Washer, Galvanized (<i>Four Required</i>)
3	10100674	1/2" Flat Washer, Galvanized (<i>Four Required</i>)
4	10101941	1/2-13 UNC Nut (<i>Four Required</i>)
5	1011786	1/2-13 UNC x 2-1/4" Hex Bolt, Galvanized (<i>Four Required</i>)
6	10DBAMF0200	Large Tool Box
7	10DBAPG0553	100 Gallon Water Tank
8	10DBAMF0381	Hose
9	10DBAPG0150	3/4" Full Port Ball Valve, Nickel Plated
10	10DBAPG0041	Elbow
11	10DBAPG0583	Nipple
12	10DBAPG0072	2-Lug Male NPT Hose Coupling
13	10DBAPG0131	ST225/75/15 Tire
14	10DBAPG0199	Water Pump
—	10DBSPG0023	Water Pump Rebuild Kit
15	10DBAMF0722	Air Dryer/Cooler for Mobile Systems

PART NUMBERS & SCHEMATICS GUIDE

Figure 3: Dustless Blasting DB800 Mobile S Pro Blaster



Item #	Part #	Description
Fig. 3		
—	10DB800SPRO	Dustless Blasting DB800 Mobile S Pro Blaster
1	10DBAMF0404	Trailer Jack Assembly
2	10100675	1/2" Lock Washer, Galvanized (<i>Four Required</i>)
3	10100674	1/2" Flat Washer, Galvanized (<i>Four Required</i>)
4	10101941	1/2-13 UNC Nut (<i>Four Required</i>)
5	1011786	1/2-13 UNC x 2-1/4" Hex Bolt, Galvanized (<i>Four Required</i>)
6	10DBAMF0200	Large Tool Box
7	10DBAPG0553	100 Gallon Water Tank
8	10DBAMF0381	Hose
9	10DBAPG0150	3/4" Full Port Ball Valve, Nickel Plated
10	10DBAPG0041	Elbow
11	10DBAPG0583	Nipple
12	10DBAPG0072	2-Lug Male NPT Hose Coupling
13	10DBAPG0131	ST225/75/15 Tire
14	10DBAPG0199	Water Pump
—	10DBSPG0023	Water Pump Rebuild Kit
15	10DBAMF0722	Air Dryer/Cooler for Mobile Systems

OPTIONAL ACCESSORIES

Air Compressor Maintenance Parts - 185 CFM

Part #	Description
10111121	50 Hour Service Kit <i>Includes: Compressor Oil Filter, Engine Fuel Filter, Engine Oil Filter</i>
10111122	250 Hour Service Kit <i>Includes: Compressor Oil Filter, Engine Fuel Filter, Engine Oil Filter, Primary Engine Air Filter, Secondary Engine Air Filter, Compressor Air Filter, Compressor Secondary Air Filter</i>
10111123	500 Hour Service Kit <i>Includes: Compressor Oil Filter, Engine Fuel Filter, Engine Oil Filter, Primary Engine Air Filter, Secondary Engine Air Filter, Compressor Air Filter, Compressor Secondary Air Filter, Separator Filter</i>
10111124	Compressor Oil Filter
10111129	Compressor Air Filter
10111130	Compressor Secondary Air Filter
10111125	Engine Fuel Filter
10111126	Engine Oil Filter
10111127	Primary Engine Air Filter
10111128	Secondary Engine Air Filter
10111131	Separator Filter

Air Compressor Maintenance Parts - 300 CFM


Part #	Description
10111132	50 Hour Service Kit <i>Includes: Compressor Oil Filter, Engine Fuel Filter, Engine Oil Filter</i>
10111133	250 Hour Service Kit <i>Includes: Compressor Oil Filter, Engine Fuel Filter, Engine Oil Filter, Primary Engine Air Filter, Secondary Engine Air Filter, Compressor Air Filter, Compressor Secondary Air Filter</i>
10111134	500 Hour Service Kit <i>Includes: Compressor Oil Filter, Engine Fuel Filter, Engine Oil Filter, Primary Engine Air Filter, Secondary Engine Air Filter, Compressor Air Filter, Compressor Secondary Air Filter, Separator Filter</i>
10111135	Compressor Oil Filter
10111138	Compressor Air Filter
10111139	Compressor Secondary Air Filter
10111125	Engine Fuel Filter
10111126	Engine Oil Filter
10111137	Primary Engine Air Filter
10111136	Secondary Engine Air Filter
10111140	Separator Filter



Use 10W30 SYNTH Engine Oil (Not Available for Sale)

OPTIONAL ACCESSORIES


Part Numbers	BLAST NOZZLES, 1-1/4" THREADS								
	Description	Size	Orifice Size	Nozzle Entry	Overall Length	Jacket Material	Thread Material	Liner Material	Nozzle Type
10SN5UN	Silicon Carbide All Poly	5	5/16"	1"	6"	Poly	Poly	Silicon Carbide	Long Venturi
10TC5BP	Brass Poly	5	5/16"	1"	5-3/4"	Poly	Poly	Tungsten Carbide	Long Venturi
10TC5AU	Tungsten Carbide Aluminum Poly	5	5/16"	1"	5-3/4"	Poly	Aluminum Alloy	Tungsten Carbide	Long Venturi
10TC5UN	Tungsten Carbide All Poly	5	5/16"	1"	5-3/4"	Poly	Poly	Tungsten Carbide	Long Venturi
10BDSH5AP	Blast Ninja	5	5/16"	1-1/4"	8.3"	Poly	Poly	Tungsten Carbide	Long Venturi
10BDSN1595XL12	XL Nozzle	5	5/16"	1-1/4"	12"	Aluminum	Aluminum	Sialon	Long Venturi
10SN6UN	Silicon Carbide All Poly	6	3/8"	1"	7"	Poly	Poly	Silicon Carbide	Long Venturi
10TC6BP	Brass Poly	6	3/8"	1"	6-1/2"	Poly	Poly	Tungsten Carbide	Long Venturi
10TC6AU	Tungsten Carbide Aluminum Poly	6	3/8"	1"	6-1/2"	Poly	Aluminum Alloy	Tungsten Carbide	Long Venturi
10TC6UN	Tungsten Carbide All Poly	6	3/8"	1"	6-3/4"	Poly	Poly	Tungsten Carbide	Long Venturi
10BDSH6AP	Blast Ninja	6	3/8"	1-1/4"	9.3"	Poly	Poly	Tungsten Carbide	Long Venturi
10BDSN1596XL12	XL Nozzle	6	3/8"	1-1/4"	12"	Aluminum	Aluminum	Sialon	Long Venturi



OPTIONAL ACCESSORIES

		ELECTRIC CONTROL LINE WITH PLUGS					
	Part Numbers	Gauge	# of Wires	Male Weather Pack Plug	3-Prong Male Twist-Lock Plug	3-Prong Female Twist-Lock Plug	Length
<i>No Image Available</i>	1011095	16	2	X	—	1015556	2 Feet
	1015748	16	3	—	1015555	1015556	13 Feet
	1015745	16	3	—	1015555	1015556	50 Feet
	1015747	16	3	—	1015555	1015556	110 Feet

		ELECTRIC CONTROL LINE PLUGS	
	Part Numbers	Prong Style	Plug Style
	1015555	3-Prong Male	Twist-Lock
	1015556	3-Prong Female	Twist-Lock
<i>No Image Available</i>	10111105	Weather Pack Plug Male & Female Plug and Connectors	Weather Pack

OPTIONAL ACCESSORIES

		BLAST HOSE				
Part Numbers		Hose ID	Hose OD	4-Ply Fabric Reinforcement	Length (Feet)	Working Pressure
	10BH1002XR	1"	1-7/8"	X	Per Foot	175 PSI
	10BH100X	1"	1-7/8"	X	50'	175 PSI
	10BH1004X	1"	1-7/8"	X	100'	175 PSI

		BLAST HOSE COUPLINGS & NOZZLE HOLDERS				
Part Numbers		Hose ID X OD	Coupling Type	Coupling Material	Thread Type	Gasket
	10QBR2	1" x 1-7/8"	2-Lug Coupling	Brass	2-Lug	10SBG/10USBG
	10NHB2	1" x 1-7/8"	Nozzle Holder	Brass	1-1/4" NPS	10NW



ALLREDI THERE

Serving these industries: Bridge, Pipeline, Tank & Tower, Concrete Services, Rail, Shipyard & Marine, Pools & Fountains, and Foundry

UNITED STATES

Pasadena, TX (*Headquarters*)
281.930.0808

Beaumont, TX
409.722.1284

Bristol, PA
215.826.8080

Corpus Christi, TX
361.887.2038

Davenport, IA
563.324.2519

Deer Park, TX
(*Service & Rental Location*)
281.930.0905

Duluth, GA
770.938.7263

Gonzales, LA
225.647.7575

Harvey, LA
504.367.8090

Houma, LA
985.580.4273

Lafayette, LA
337.267.1440

Theodore, AL
251.338.7525

CANADA

Calgary, Alberta
403.279.1924

Coquitlam, BC
604.464.6979

Edmonton, Alberta
780.468.2588 (Manus)
780.425.5510 (Mod-U-Blast)

Hamilton, Ontario
905.527.6000 / 888.794.5665

Mississauga, Ontario
905.890.5837

Winnipeg, Manitoba
204.256.3324

WWW.ALLREDI.COM / 800.252.7848

WWW.ALLREDI-CA.COM / 800.661.3842

Allredi™ and Marco® are registered trademarks of Allredi, LLC.
Mod-U-Blast® is a registered trademark of Allredi Blast & Abrasives Canada, Inc.
All other brand names or marks are used for identification purposes and are trademarks of their respective owners.

ALLREDI™

Literature #106M657_2/26/2026